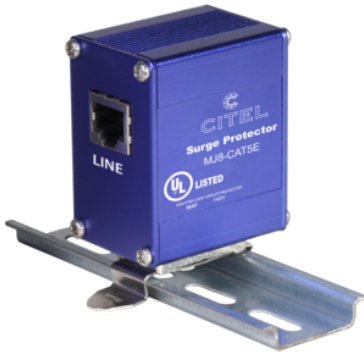
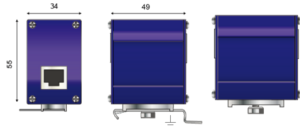


MJ8-CAT5E



- Cat.5,5E and Cat.6 Surge Protector
- Hybrid GDT and Diode Technology
- 10/100/1000Mbps Compatible
- Bi-Directional Protection
- Shielded Connector Configurations
- DIN Rail, Screw Lug, and Flange Mounting



Electrical Characteristics		
Insertion loss		< 1 dB
Max. load current	IL	1000 mA
Max. capacitance	C	< 25 pF
Impulse current 2 x 10/350µs Test - D1 Category	Iimp	500 A
Capacity Maximum	pF	<25
label.propertyGroup.INSTALLATION		
Operating TemperatureMin	°C	-40.0000
Operating TemperatureMax	°C	85.0000
Operating TemperatureMin	°F	-40.0000
Operating TemperatureMax	°F	85.0000
Operating Relative HumidityMax	%RH	95
Operating AltitudeMin	Ft	2000.0000
Operating AltitudeMax	Ft	6500.0000
Housing/Enclosure material		Aluminum
Mounting		Flange
IP Environmental ratingIP		IP20
Installation Location		indoor
Product DimensionL	mm	44.0000
Product DimensionH	mm	54.0000
Product DimensionW	mm	34.0000
Product DimensionL	In	1.7300
Product DimensionH	In	2.1200
Product DimensionW	In	1.3300
label.propertyGroup.MISCELLANEOUS		
Individual Pack		Yes
Storage TemperatureMin	°C	-40.0000
Storage TemperatureMax	°C	85.0000
Storage TemperatureMin	°F	-40.0000
Storage TemperatureMax	°F	85.0000
label.propertyGroup.INSTALLATION		
Cable type		Ethernet
Mechanical Characteristics		
Weight		0.114 kg
Standards		
Certification		UL listed
Part number		
560201		